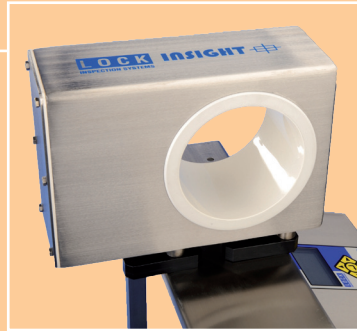
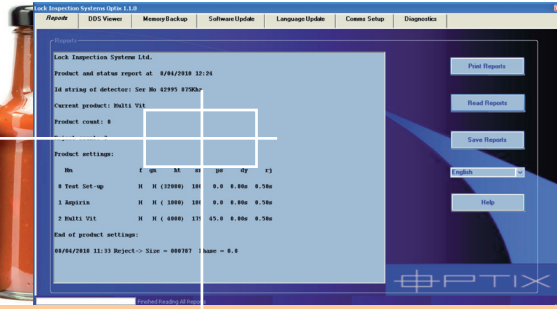
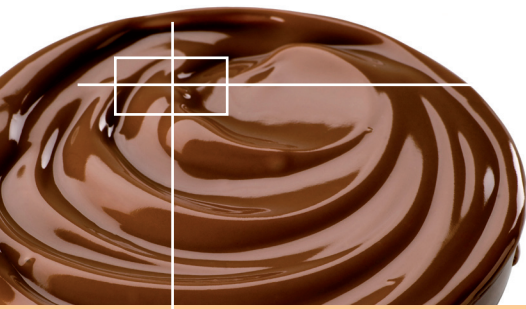


TECHNICAL DATA

INSIGHT PL



IN PURSUIT OF PURITY...



DDS (Direct Digital Signal)

Analyse
Detect
Report

- **Integrated Digital Search Head and DDS vector display deliver perfect product setups**
- **Best in class sensitivity to magnetic and non magnetic metals**
- **Stable to extreme vibration and product signal**
- **External USB port**
- **Available with wired or wireless ethernet datalink port and SCADA capability**
- **User friendly operation with auto-learn feature**
- **Comprehensive range of industry specific reject valves**
- **INSIGHT PL detector heads are sealed to IP66/NEMA 4X**
- **Menu with unlimited language options**

The INSIGHT PL range of pipeline metal detectors has been purpose designed to detect contaminants in fluid products transported by pipeline - in particular meat, preserves, soups, dairy products, pastes and petfoods. The INSIGHT PL can be supplied mounted on a backplate or integrated into a mobile stand with optional fast acting automatic reject valve.

Metal detection and signal processing take place in the compact INTEGRATED DIGITAL SEARCH HEAD. Sophisticated OPTIX detector management software uses Locks unique DDS (Direct Digital Signal) vector diagram to generate the detailed product profile needed to achieve perfect product setups delivering industry leading sensitivities for both magnetic and non magnetic metals, accurately detecting the tiniest particles of challenging contaminants such as stainless steel wire. This sensitivity can be relied upon for protection in a wide range of environments whether chilled, ambient or high temperature, across a broad range of flowrates and for all industry standard pipe sizes.

The INSIGHT PL sets new standards for good manufacturing practice - specifically - traceability, efficiency, product quality, and compliance with existing as well as forthcoming regulatory requirements. This is achieved using an array of communications options - each unit is supplied with an external USB port to download data for secure storage and distribution in pdf or other formats; wired or wireless ethernet and SCADA capability are available.



TECHNICAL DATA

INSIGHT PL



IN PURSUIT OF PURITY...

Automatic Setup

Conductive products such as meat, sauces and soups may require careful setup if optimum sensitivity is to be achieved in conjunction with high productivity. The INSIGHT PL will setup and store 200 different presets, automatically calibrating for product effect as it passes through the system.

Integrated Digital Search Head

- Metal detection, control and signal processing all take place within the ultra compact detector head
- Sealed to IP66/NEMA 4X
- Automatic balance control for adjustment-free operation
- User-replaceable electronic module for minimum downtime
- All industry standard pipe sizes

OPTIX Software

OPTIX is a powerful diagnostic and problem solving tool for engineers and operators. Functions available using OPTIX are:

- Reports
- Direct Digital Signal (DDS) Viewer
- Memory Backup
- Language and Software Update
- Diagnostics

General

- User friendly membrane or optional touchscreen HMI both feature unlimited language options and DDS (Direct Digital Signal) vector diagram display a view into the metal detector
- Automatic TEST SAMPLE prompt
- Permanent memory stores up to 8000 data events, which are retained when power is interrupted or disconnected
- Data reports can be downloaded to a standard memory stick for secure storage or distribution in pdf and other formats

Security Codes

Four password protected security levels are provided:

- L1: Operator level to change product types
- L2: Supervisor level to change setup mode
- L3: Engineering level to access factory setup parameters
- L4: Administration level to enable multi-user ID/password system

Communications

Every INSIGHT PL metal detector is available with wired or wireless ethernet connectivity and SCADA capability. The external USB port allows all events and product presets to be downloaded onto a standard memory stick or PC to enable secure storage and distribution of quality records in PDF or other formats.

Outputs

- Voltage-free relay contacts. Rating 240V, 3A resistive

Power Supply

- Universal power supply 88-264V AC 47-63Hz

Operating Environment

- Temperature: -10° to 60°C/14° to 140°F
- Humidity: up to 95% RH

Lock Inspection Systems Ltd

Lock House, Neville Street, Oldham, OL9 6LF, UK
Tel: +44 (0) 161 624 0333 Fax: +44 (0) 161 624 5181
Email: sales@lockinspection.co.uk

Lock Inspection Systèmes S.A.R.L.

Parc Silic, Bâtiment H, 12 avenue de Québec, Silic 620, Villebon, 91945 Courtaboeuf Cx, France
Tel: +33 (0) 169591620 Fax: +33 (0) 1 69 59 16 21
Email: sales@lockinspection.fr

Lock Inspection Systems Inc

207 Authority Drive, Fitchburg, MA 01420-6094, USA
Tel: +1 (0) 978 343 3716 / 800 227 5539
Fax: +1 (0) 978 343 6278
Email: sales@lockinspection.com

Lock Inspection Systems BV

Daalderweg 17, 4879 AX Etten-Leur, Nederland
Tel: +31 (0) 76 50 30 212 Fax: +31 (0) 76 50 89 800
Email: sales@lockbv.nl

Lock Inspection Systems (China Office)

Rm 1105, No 5 Building SIPP, 1111 Zhennan Road, Shanghai 200331, P.R.China
Tel: +86 (0) 21 6608 1980 Fax: +86 (0) 21 6608 1982
Email: sales@lockuk.cn

www.lockinspection.com